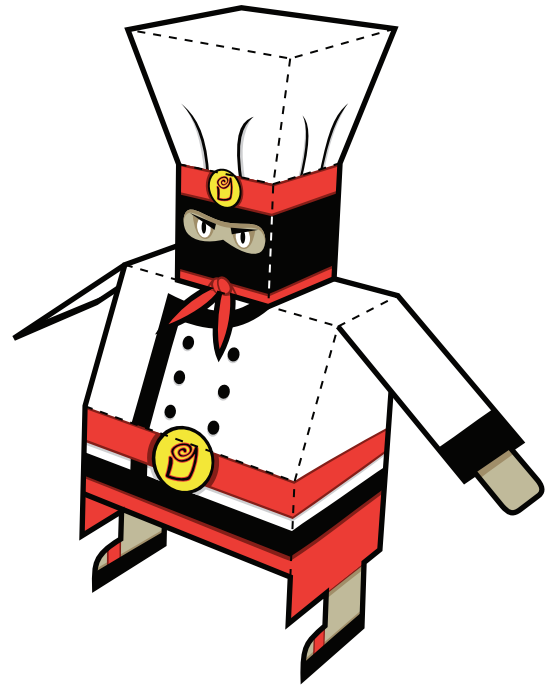


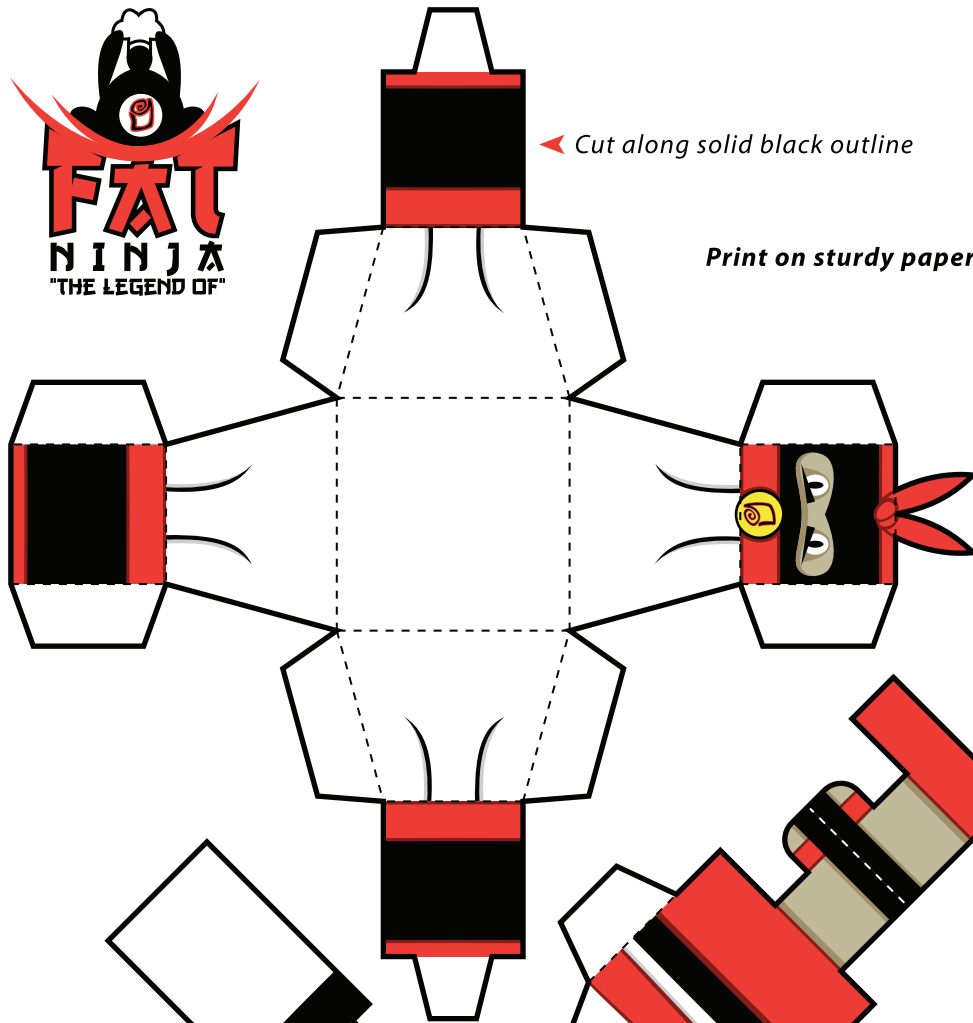


Cut along solid black outline

Print on sturdy paper



This is what your assembled FAT NINJA Paper Foldable should look like!



Fold on dotted lines

Tape/glue folded tabs to insides

Tape/glue leg sides together

Tape/glue arm sides together

Cut slits to attach head piece



www.zephyr-games.com/legend-of-fat-ninja